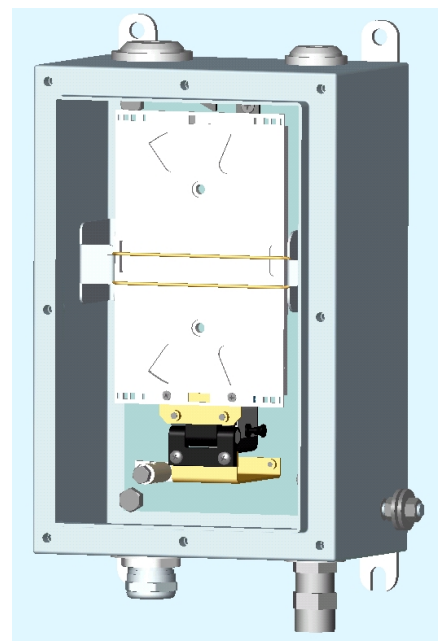




Weatherproof Splicing Enclosure IP67 Rated (LUL Compliant)

Part Number 7700-SC-08-001

- 2mm Durable brushed Stainless Steel AISI 304
- Up to 12—Fibre splicing capacity
- Individual pivoting tray access
- Up to 12 fibres per tray
- Enclosure earthed to LUL Standard
- Internal 12 position SC optical patch facility



Unit shown with door removed

Data sheet Issue: 1

Fibre Optic Products & Services

This weatherproof enclosure is manufactured from AISI 304 Stainless Steel providing secure splice and patching for up to 12 fibres. Ideally suited to harsh external applications such as Track & Roadside environments, the cabinet has an IP rating of IP67.

The enclosure is Wall, Pole or Frame / Unistrut mountable with steel external mounting points fitted at each corner. The 12-fibre pivoting splice cassette management system makes cable management and maintenance logical and straightforward. Cable tubes are routed safely around the unit via cable management rings.

A 12 position SC connector panel is fitted internal to the enclosure as standard for interconnecting optical circuits as a patching facility but most optical fibre connector systems can be accommodated.

Cable entry and exit is uncomplicated via up to 4 entries, 2 from below & 2 from above with each incoming cable central strength member securely secured on to the base plate. Patching cords can enter/exit the enclosure through one of the entry/exit positions using a multi cable type gland, that will retain the enclosures IP67 rating.

Access to the interior of the cabinet is obtained through the bolted front door which has security bolts fitted at each corner for added security.

IP67 Rating. This means the Ingress Protection is:

(6) - Totally protected against dust

(7) - Protected against the effect of immersion between 15cm and 1m.

AISI 304. The most commonly specified (chromium-nickel stainless class) stainless steel.

This grade withstands corrosion, is durable and resists most chemicals.



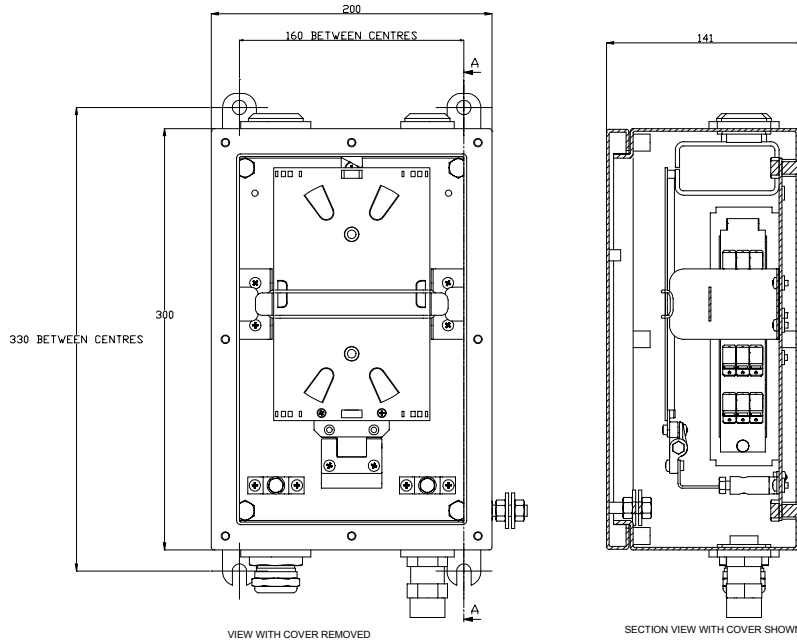
MAINFRAME COMMUNICATIONS LIMITED

NETWORK HOUSE, TEMPLE FARM INDUSTRIAL ESTATE,
SOUTHEND-ON-SEA, ESSEX, SS2 5TF, UNITED KINGDOM.

Tel: +44 (0) 1702 443 800 ~ Fax: +44 (0) 1702 443 801

Email: info@mainframecomms.co.uk ~ Web: www.mainframecomms.co.uk

Schematic Layout



Data sheet Issue: 1

Fibre Optic Products & Services

Technical Specifications

Dimensions:	200mm (Width) 300mm (Height) 141mm (Depth)
Weight:	17 kg
Capacity:	Up to 12 splices Up to 12xFC,SC,ST or 24xLC Connectorisations
Materials:	2mm Stainless Steel to AISI 304
Finish:	Brushed
Cable Access:	2 x M32 Threaded Entries 2 x M25 Threaded Entries

Accessories:

	<u>Description</u>
	M32 Cable Gland Kit
	M25 Cable Gland Kit
	M20 Cable Gland Kit
	Cassette Assembly
	Pole Mounting Kit
	Splice Support Sleeve
	M25 Blanking Plug
	M32 Blanking Plug
	M32 to M20 Reducer
	M32 to M25 Reducer
	M25 to M20 Reducer
	M32 Multi Cable Gland

Conforming Standards

2-01001-002-A1	Fire safety performance of materials.
E1042A6	Fire safety performance of materials.
E7202A2	Environmental requirements for signalling equipment.
IEC 61373 : 1999	Railway applications - Rolling stock equipment shock and vibration tests.
S&CSE-ST0050-A2	Standard for Optical Fibre Cable Joint Enclosures (general overview).

MAINFRAME COMMUNICATIONS LIMITED

NETWORK HOUSE, TEMPLE FARM INDUSTRIAL ESTATE,
SOUTHEND-ON-SEA, ESSEX, SS2 5TF, UNITED KINGDOM.

Tel: +44 (0) 1702 443 800 ~ Fax: +44 (0) 1702 443 801

Email: info@mainframecomms.co.uk ~ Web: www.mainframecomms.co.uk