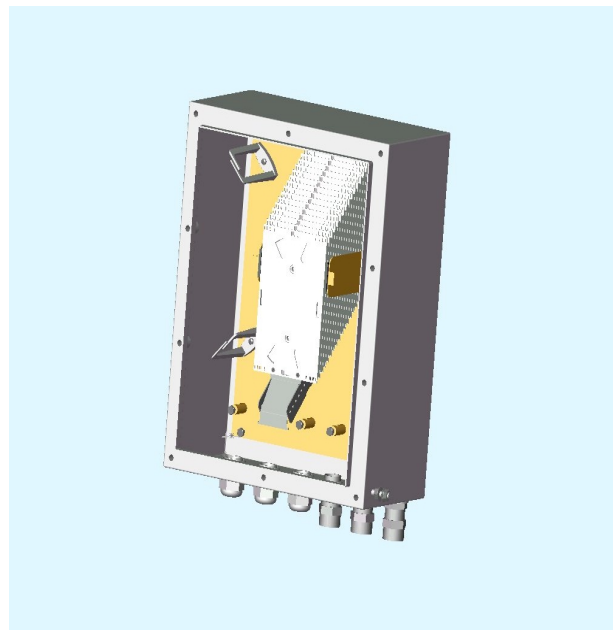




## Weatherproof Splicing Enclosure IP67 Rated (LUL Compliant)

Part Number 7874-004

- 2mm Durable brushed Stainless Steel AISI 304
- Up to 192 splicing capacity
- Individual pivoting tray access
- Up to 12 fibres per tray



Data sheet Issue: 1

Fibre Optic Products & Services

Unit shown with door removed

This weatherproof enclosure is manufactured from AISI 304 Stainless Steel providing secure splicing for up to 192 fibres. Ideally suited to harsh external applications such as Track & Roadside environments the cabinet is sealed to IP67.

The enclosure is Wall, Pole or Frame / Unistrut mountable with steel external mounting points fitted at each corner.

The 12-fibre pivoting splice cassette management system makes cable management and maintenance logical and straightforward. Cable tubes are routed safely around the unit via cable management rings.

Cable entry and exit is uncomplicated via up to 6 entries from below, with each incoming cable central strength member securely secured on to the base plate.

Access to the interior of the cabinet is obtained through the bolted front door which has security bolts fitted at each corner for added security. A large label pocket is located on the inside of the door for identifying the fibre splices & circuits.

**IP67 Rating.** This means the Ingress Protection is:

(6) - Totally protected against dust

(7) - Protected against the effect of immersion between 15cm and 1m.

**AISI 304.** The most commonly specified (chromium-nickel stainless class) stainless steel.

This grade withstands corrosion, is durable and resists most chemicals.



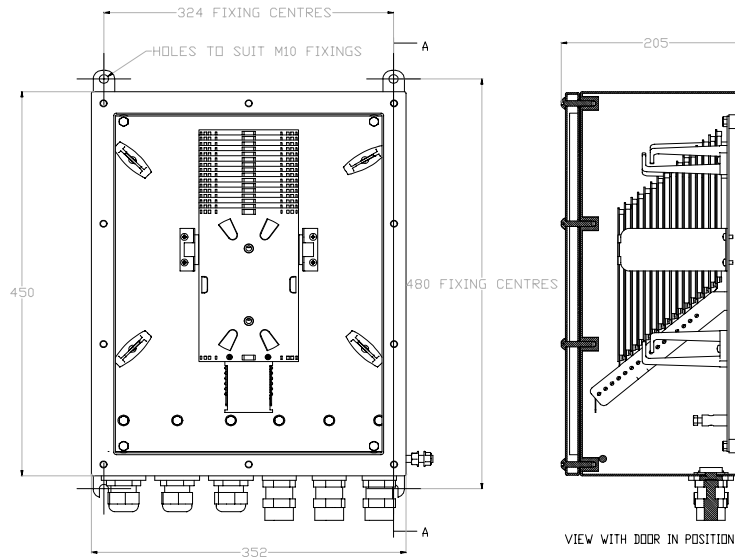
**MAINFRAME COMMUNICATIONS LIMITED**

NETWORK HOUSE, TEMPLE FARM INDUSTRIAL ESTATE,  
SOUTHEND-ON-SEA, ESSEX, SS2 5TF, UNITED KINGDOM.

Tel: +44 (0) 1702 443 800 ~ Fax: +44 (0) 1702 443 801

Email: [info@mainframecomms.co.uk](mailto:info@mainframecomms.co.uk) ~ Web: [www.mainframecomms.co.uk](http://www.mainframecomms.co.uk)

## Schematic Layout



## Technical Specifications

<b>Dimensions:</b>	352mm (Width) 450mm (Height) 205mm (Depth)
<b>Weight:</b>	25 kg
<b>Capacity:</b>	Up to 192 splices
<b>Materials:</b>	2mm Stainless Steel to AISI 304
<b>Finish:</b>	Brushed
<b>Cable Access:</b>	3 x M32 Threaded Entries 3 x M25 Threaded Entries

<b>Accessories:</b>	<b>Description</b>
	M32 Cable Gland Kit
	M25 Cable Gland Kit
	M20 Cable Gland Kit
	Cassette Assembly
	Pole Mounting Kit
	Splice Support Sleeve
	M25 Blanking Plug
	M32 Blanking Plug
	M32 to M20 Reducer
	M32 to M25 Reducer
	M25 to M20 Reducer
	M32 Multi Cable Gland

## Conforming Standards

<b>2-01001-002-A1</b>	Fire safety performance of materials.
<b>E1042A6</b>	Fire safety performance of materials.
<b>E7202A2</b>	Environmental requirements for signalling equipment.
<b>IEC 61373 : 1999</b>	Railway applications - Rolling stock equipment shock and vibration tests.
<b>S&amp;CSE-ST0050-A2</b>	Standard for Optical Fibre Cable Joint Enclosures (general overview).

### MAINFRAME COMMUNICATIONS LIMITED

NETWORK HOUSE, TEMPLE FARM INDUSTRIAL ESTATE,  
SOUTHEND-ON-SEA, ESSEX, SS2 5TF, UNITED KINGDOM.

Tel: +44 (0) 1702 443 800 ~ Fax: +44 (0) 1702 443 801

Email: [info@mainframecomms.co.uk](mailto:info@mainframecomms.co.uk) ~ Web: [www.mainframecomms.co.uk](http://www.mainframecomms.co.uk)